

## Product Description

The type PC80 is an aluminium high capacity single point load cell with a high performance potting for superior environmental protection. Designed for rugged industrial applications.

## Application

- Aerial work platforms and telescopic booms for load limitation\*
- Designed to conform to EN280

## Key Features

- Capacity of 2 000 kg
- Dual bridge measurement circuits for added safety
- Aluminium construction for minimized weight
- Environmental Protection IP67
- Maximum platform size up to 1400 x 1400 mm nominal

## Packed Weight

- 4.0 kg

## Available Accessories

- Compatible range of electronics

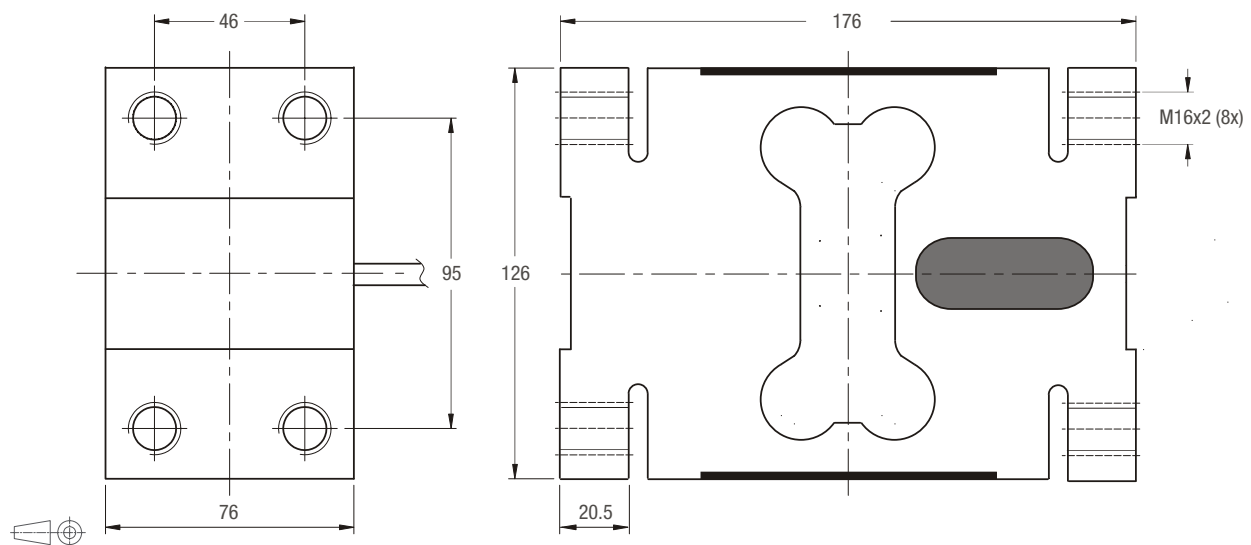
\* Attention is drawn to European patent 1382562 B1 of MOBA-Mobile Automation AG being in force in Germany, France, Italy, Ireland and Great Britain and concerning a crane mechanism and a working platform with load apparatus having, amongst other things, a weighing cell as the only connection between a cantilever and a working platform. Using the PC80 Single Point Load Cell in accordance with Claim 1 of European patent 1382562 B1 will be considered infringement.

### Specifications

	(E <sub>max</sub> )	kg	2000	
			GP	G3
Maximum capacity				
Accuracy class				
Temperature effect on minimum dead load output (TC <sub>0</sub> )	%*RO/10°C		≤ ± 0.0400	≤ ± 0.0230
Temperature effect on sensitivity (TC <sub>RO</sub> )	%*RO/10°C		≤ ± 0.0200	≤ ± 0.0100
Combined error	%*RO		≤ ± 0.0500	≤ ± 0.0200
Non-linearity	%*RO		≤ ± 0.0400	≤ ± 0.0166
Hysteresis	%*RO		≤ ± 0.0400	≤ ± 0.0166
Creep error (30 minutes) / DR	%*RO		≤ ± 0.0600	≤ ± 0.0166
Rated Output (RO)	mV/V		2 ± 10%	
Zero balance	%*RO		≤ ± 10	
Excitation voltage	V		5...15	
Input resistance (R <sub>LC</sub> )	Ω		410 ± 15	
Output resistance (R <sub>out</sub> )	Ω		350 ± 3	
Insulation resistance (100 V DC)	MΩ		≥ 5 000	
Safe load limit (E <sub>lim</sub> )	%*E <sub>max</sub>		150	
Ultimate load	%*E <sub>max</sub>		300	
Safe side load	%*E <sub>max</sub>		100	
Maximum platform size	mm		1 400 x 1 400	
Maximum off centre distance at maximum capacity	mm		175	
Compensated temperature range	°C		-10...+40	
Operating temperature range	°C		-30...+70	
Load cell material			aluminium	
Sealing			potted	
Protection according EN 60 529			IP67	

The limits for Non-Linearity, Hysteresis, and TC<sub>RO</sub> are typical values.

### Dimensions (in mm)



Mounting bolts M16x2; torque 200 Nm. Torque value assumes oiled threads.

### Wiring

- The load cell is provided with 2 shielded 6 conductor cable (AWG 26). Cable jacket polyurethane
- Cable length: 2x 6.0 m
- Cable diameter: 5.8 mm
- The shield is connected to the load cell body

