



## Product Description

The type SBT is a steel load cell with a high performance potting for superior environmental protection. It is primer painted for use in harsh industrial applications.

## Application

- On board vehicle weighing systems such as refuse collection trucks and tipper trucks, both rigid and trailer forms

## Key Features

- Capacity of 10 000 kg
- Painted steel construction
- Environmental Protection IP68

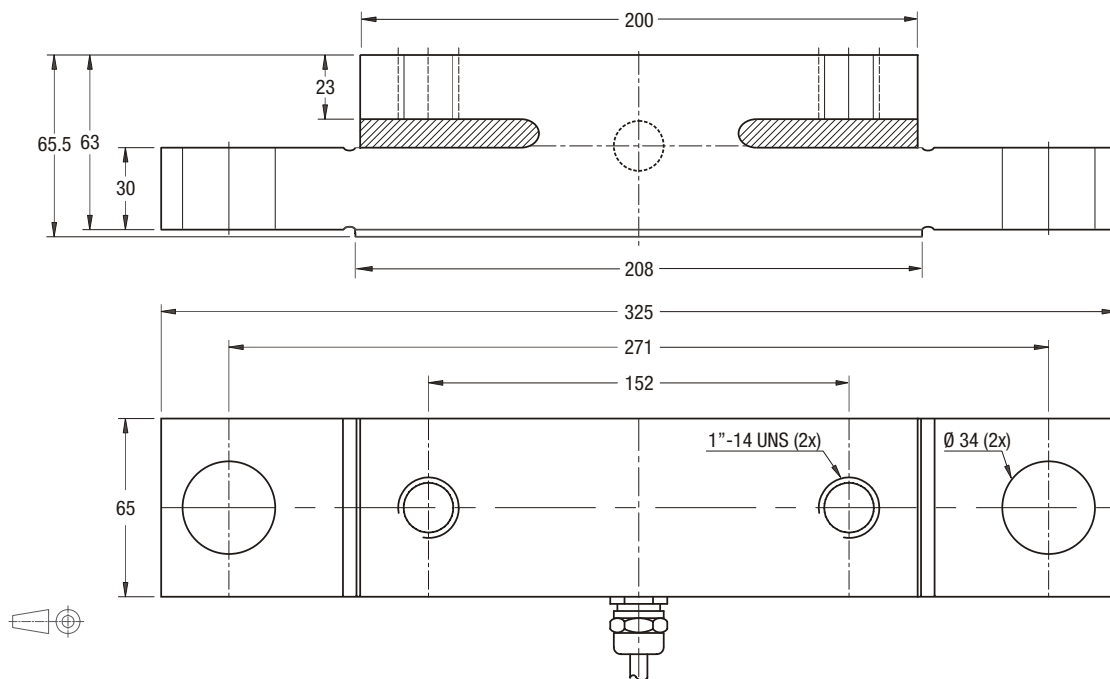
## Packed Weight

- 8.5 kg

### Specifications

Maximum capacity	(E <sub>max</sub> )	kg	10 000
Accuracy class			GP
Temperature effect on minimum dead load output	(TC <sub>0</sub> )	%*RO/10°C	≤ ± 0.0400
Temperature effect on sensitivity	(TC <sub>RO</sub> )	%*RO/10°C	≤ ± 0.0200
Combined error		%*RO	≤ ± 1.0000
Creep error (30 minutes) / DR		%*RO	≤ ± 0.0600
Rated Output	(RO)	mV/V	0.82 ± 10%
Zero balance		%*RO	≤ ± 5
Excitation voltage		V	5...15
Input resistance	(R <sub>LC</sub> )	Ω	385 ± 20
Output resistance	(R <sub>out</sub> )	Ω	350 ± 3
Insulation resistance (100 V DC)		MΩ	≥ 5 000
Safe load limit	(E <sub>lim</sub> )	%*E <sub>max</sub>	150
Ultimate load		%*E <sub>max</sub>	300
Safe side load		%*E <sub>max</sub>	100
Compensated temperature range		°C	-10...+40
Operating temperature range		°C	-30...+70
Load cell material			tool steel; painted
Sealing			potted
Protection according EN 60 529			IP68

### Dimensions (in mm)



Mounting bolts 1" 14 UNS 10.9; torque 1 030...1 140 Nm. Torque value assumes oiled threads.

### Wiring

- The load cell is provided with a shielded, 4 conductor cable (AWG 20).  
Cable jacket polyurethane
- Cable length: 10.0 m
- Cable diameter: 7.5 mm
- The shield is not connected to the load cell body

