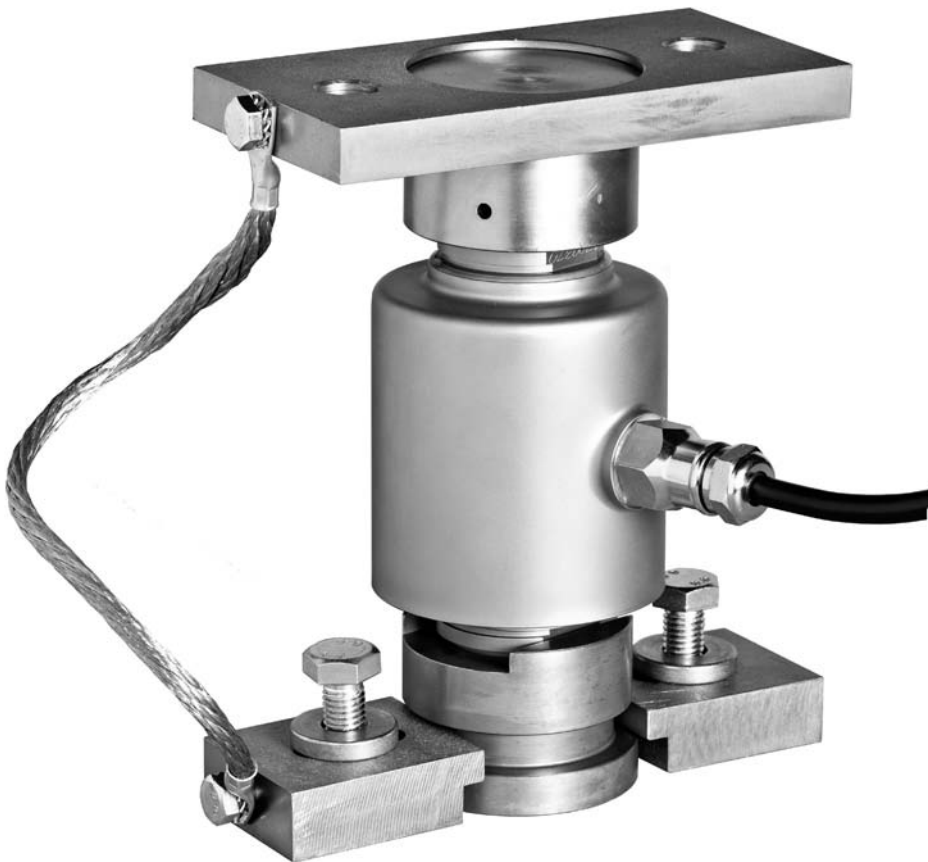


30 t ... 50 t



Rocker System 55-01-07C with RC3 Load Cell



Flintec Bubble Level

## Product Description

Flintec load cell supports are designed to prevent unwanted forces from affecting load cell performance.

The type 55-01-07C is a self-aligning rocker system, combining excellent load introduction with low profile design.

Especially designed for the RC3/RC3D load cells.

Material: steel, zinc plated.

A mounting fixture is available for easy and accurate positioning of foundation plates.

The unique Flintec bubble level is available for accurate vertical alignment of the load cell.

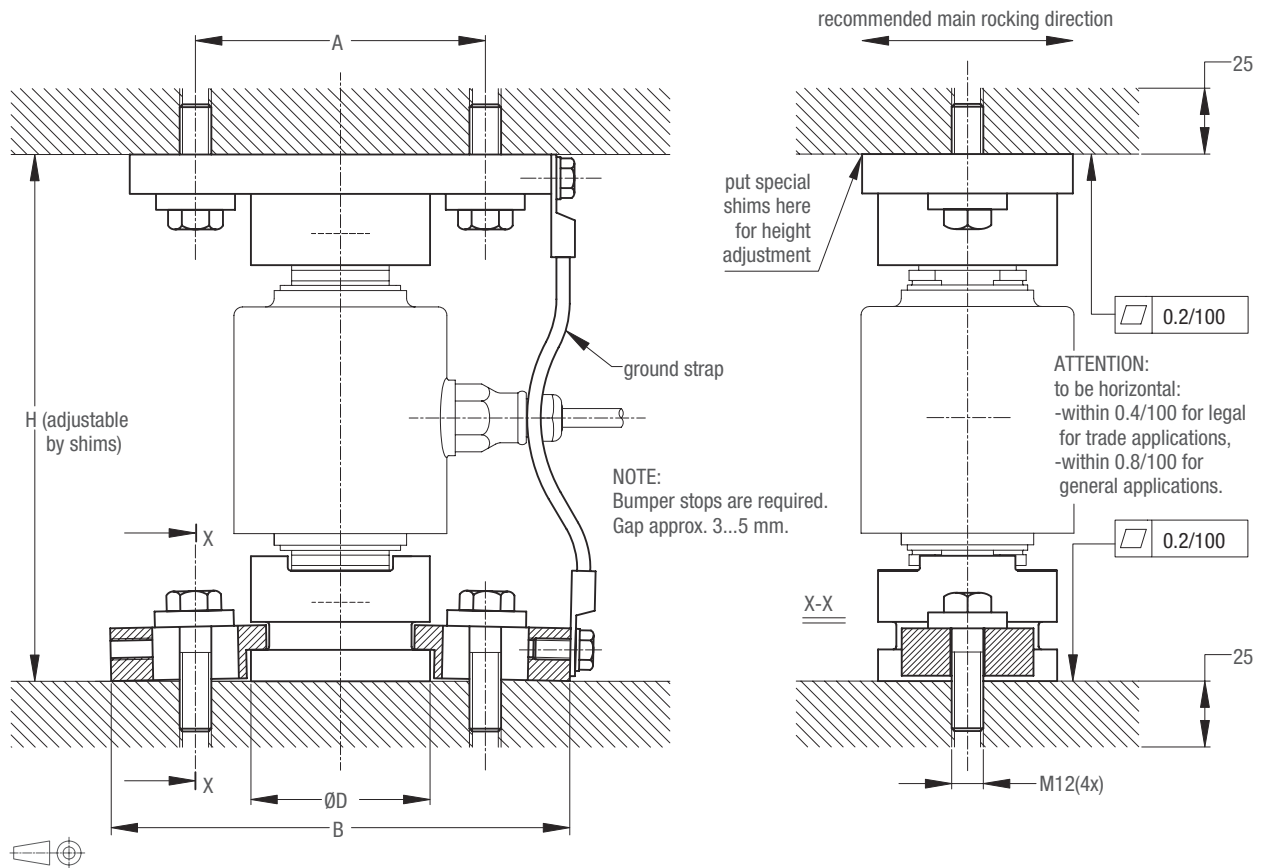
## Key Features

- Capacity 30 t, 40 t and 50 t
- Low cost
- Very easy to install
- Especially designed for weighbridges
- W&M certified

## Available Accessories

- Mounting fixture
- Bubble level
- Welding plate

### Dimensions (in mm)



| Load Cell Type                   | A   | B   | D  | H   |
|----------------------------------|-----|-----|----|-----|
| RC3-30 t                         | 110 | 176 | 68 | 200 |
| RC3-40 t / RC3D-30 t / RC3D-40 t | 110 | 176 | 68 | 210 |
| RC3-50 t / RC3D-50 t             | 130 | 196 | 88 | 240 |

Assembly drawings with installation instructions and CAD files for customer's own applications drawings are available on request.

### Accessories

