

Product Description

The type XT50 is a hermetically sealed bolt-on extensometer suited for use in harsh industrial, agricultural and construction equipment applications. It is based on a full Wheatstone strain gauge bridge and delivers a high-gain output signal proportional to the elastic deformation of the substrate part it is bolted to.

Application

- Load and stress monitoring in structural parts, overload sensing and stability control on mobile and stationary construction and agricultural equipment

Key Features

- Stainless steel construction
- Environmental Protection IP68 with complete hermetic sealing
- High resolution
- Low activation force
- Easy bolt installation (2x M10), no adhesives required
- Shielded cable

Options

- 4 to 20 mA or digital outputs
- Dual bridge measurement circuits for added safety

Packed Weight

- 0.9 kg

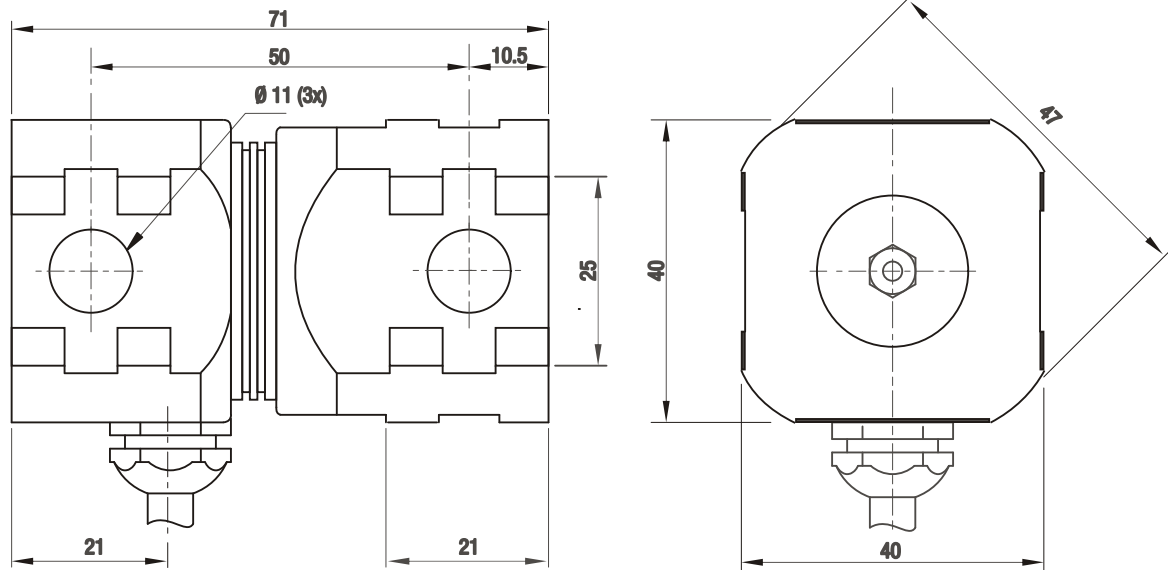
Available Accessories

- Compatible range of electronics, e.g. on-board load moment indication

Specifications

Rated Output	(RO)	mV/V	1.2 ± 10 % at strain of 500 µm/m
Zero balance		%*RO	≤ ± 5
Excitation voltage		V	5...10
Input impedance	(R _{LC})	Ω	1 100 ± 50
Output impedance	(R _{out})	Ω	1 000 ± 2
Insulation resistance (100 V DC)		MΩ	≥ 5 000
Operating temperature range		°C	-30...+70
Sensor material			stainless steel 17-4 PH (1.4548)
Sealing			complete hermetic sealing
Protection according EN 60 529			IP68 (up to 2 m water depth)

Dimensions (in mm)



Mounting bolts M10 8.8; torque 50 Nm. Torque value assumes oiled threads.

Wiring

- The extensometer is provided with a shielded, 4 conductor cable (AWG 24). Cable jacket PVC.
- Cable length: 3 m
- Cable diameter: 5.5 mm
- The shield is floating

